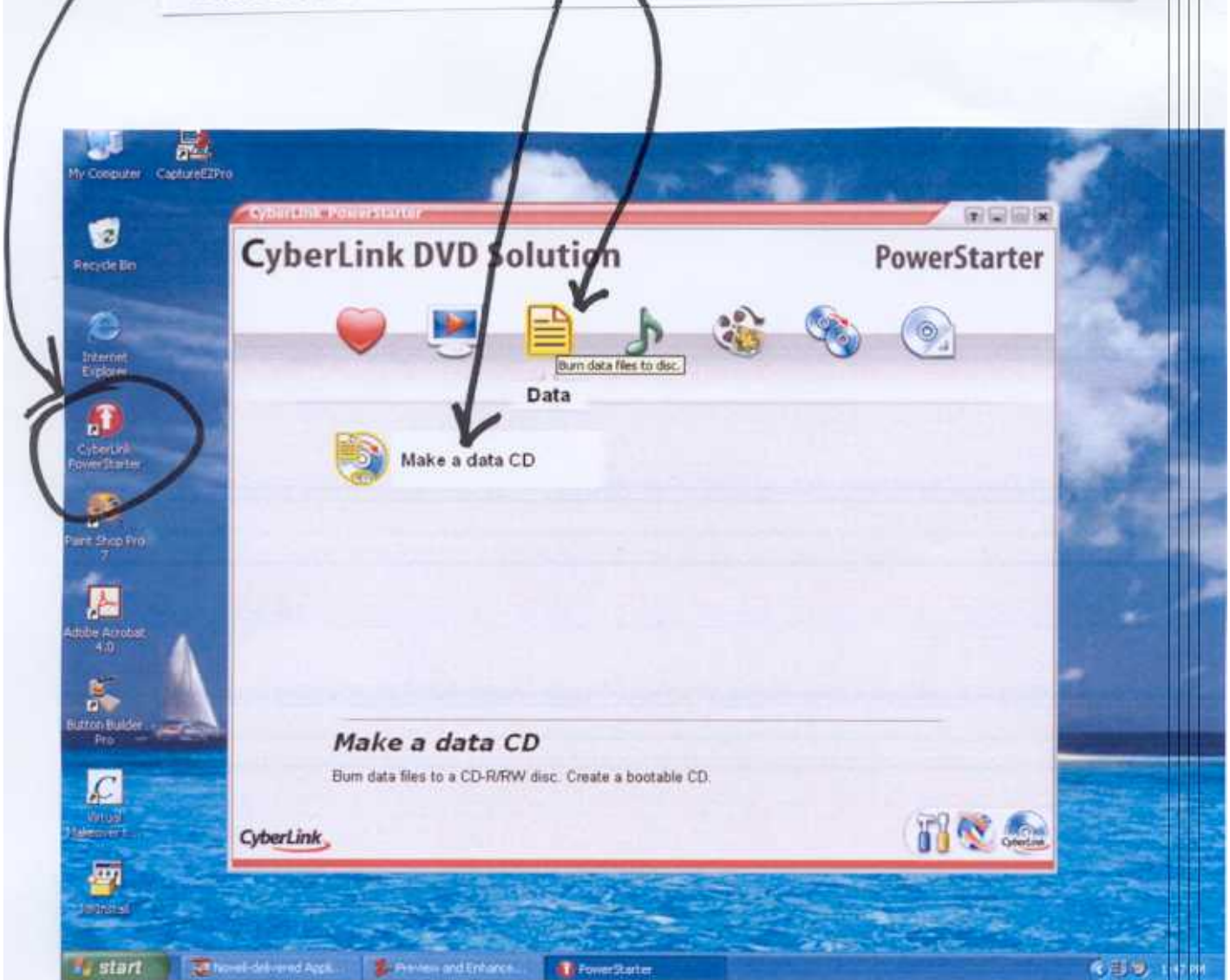


CyberLink Power Starter CD/DVD Program

Minford Local School District
2005 - 2006
Rama Lavender, Author

Create a CD of Miscellaneous Files

Click on the Cyberlink PowerStarter icon on the desktop.
Click on the DATA icon.
Click on MAKE A DATA CD.

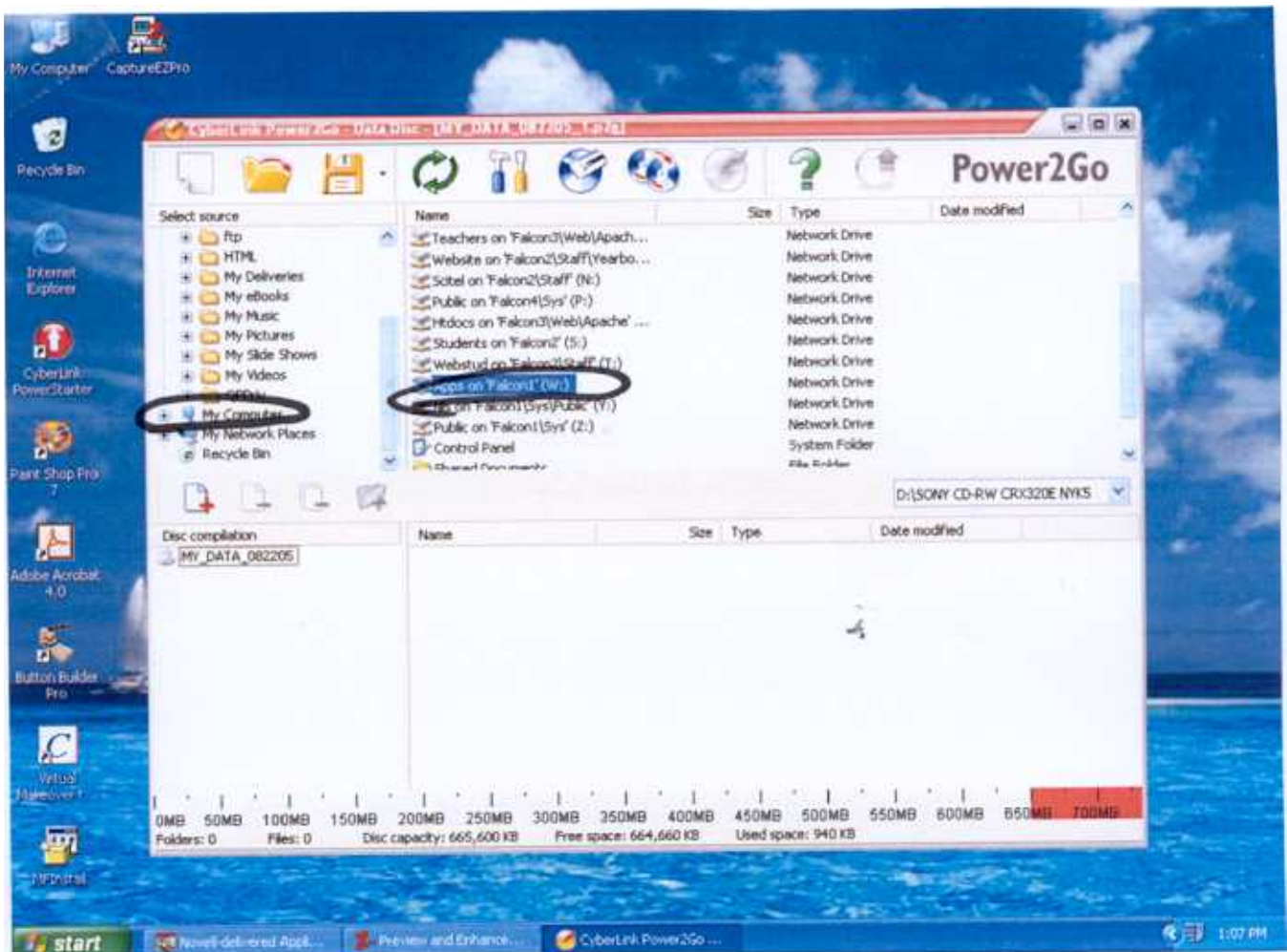


For this guide, I will take you through the steps to copy the ANIMALS and the BIRTHDAY folders on drive w:, Website Graphics.

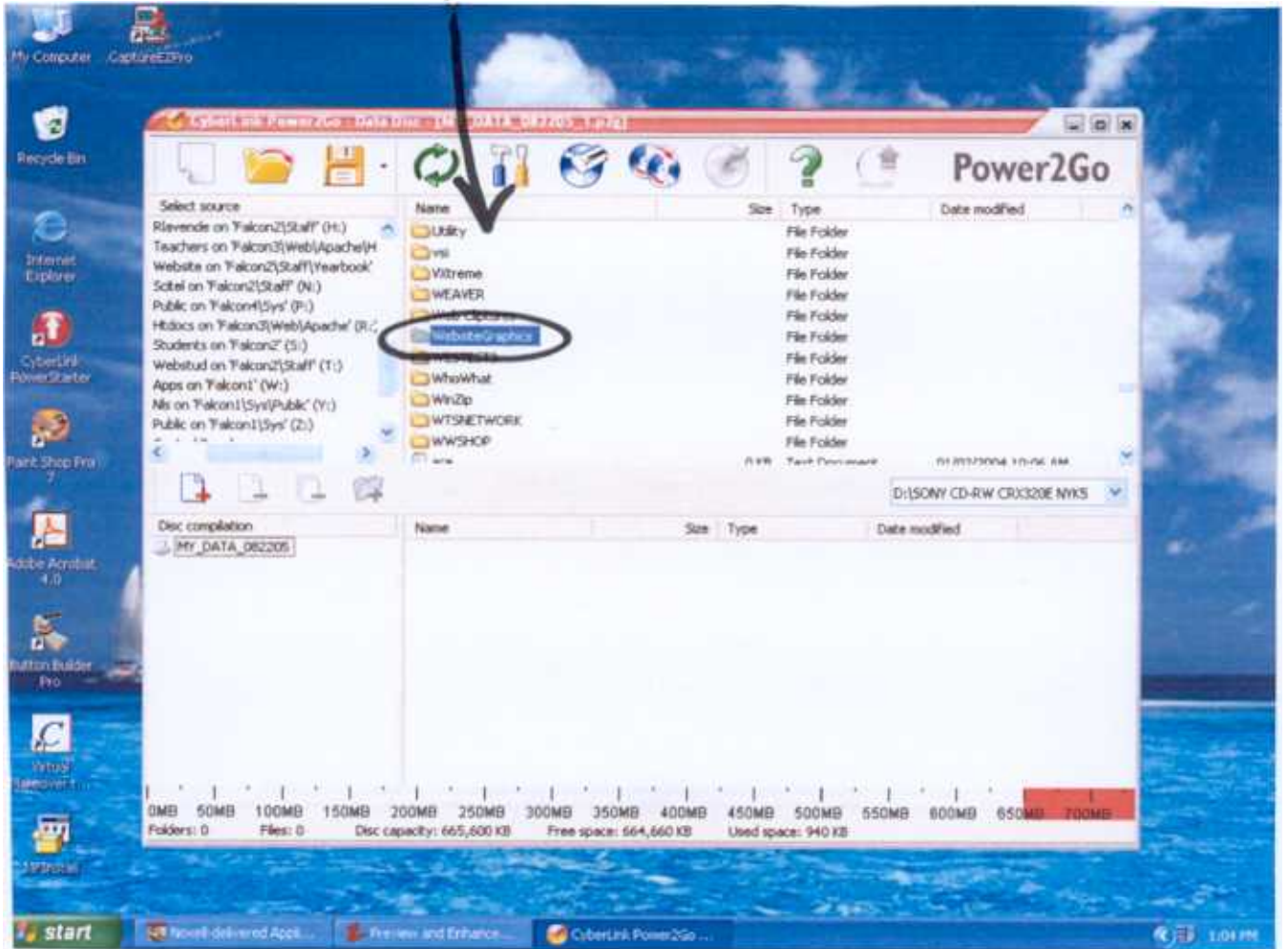
Follow the instructions in this guide BEFORE you try to create a data CD on your own. You can stop at the BURN process so you don't ruin a good CD.

Click once on MY COMPUTER.

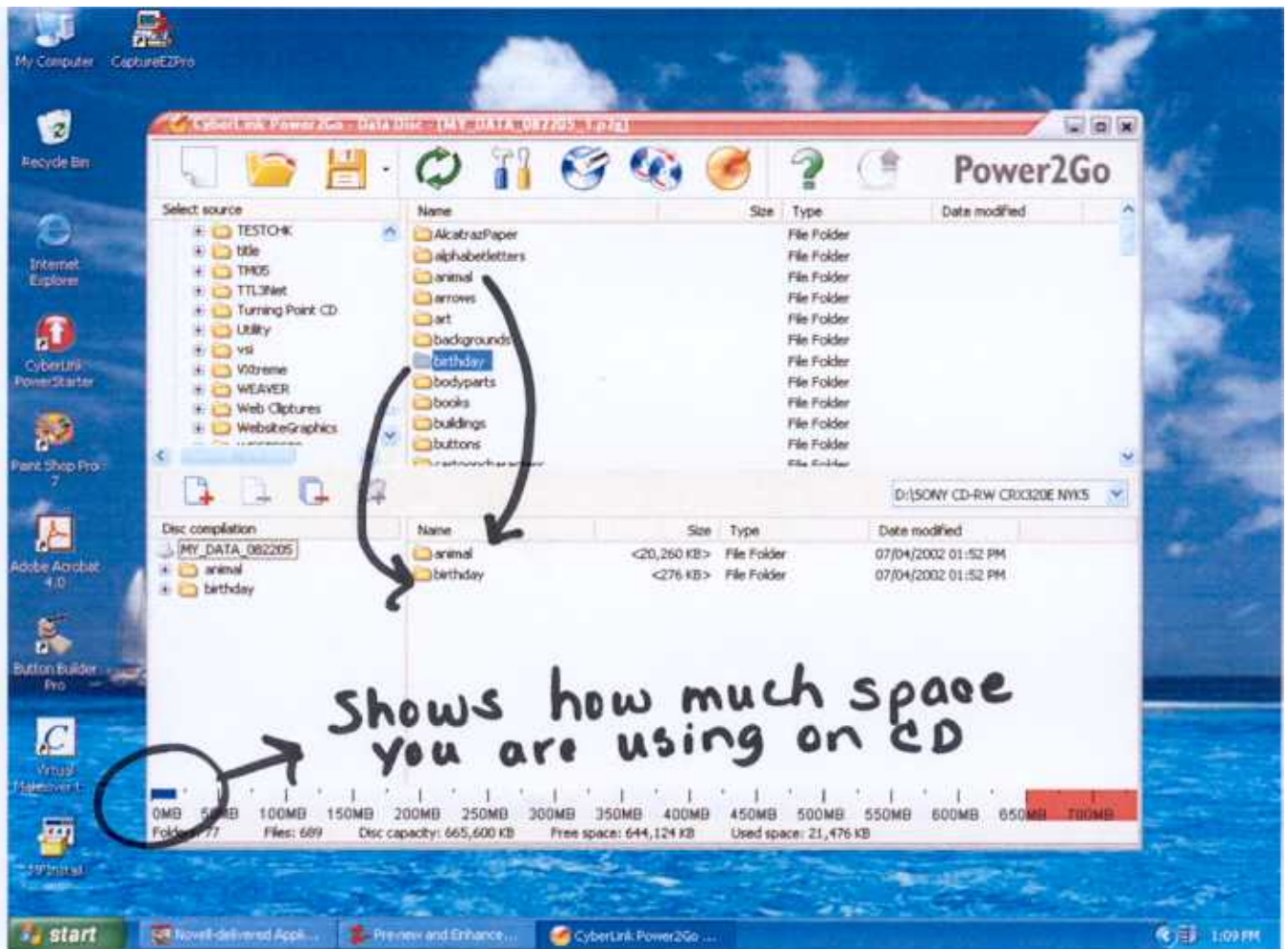
Double click on DRIVE W:



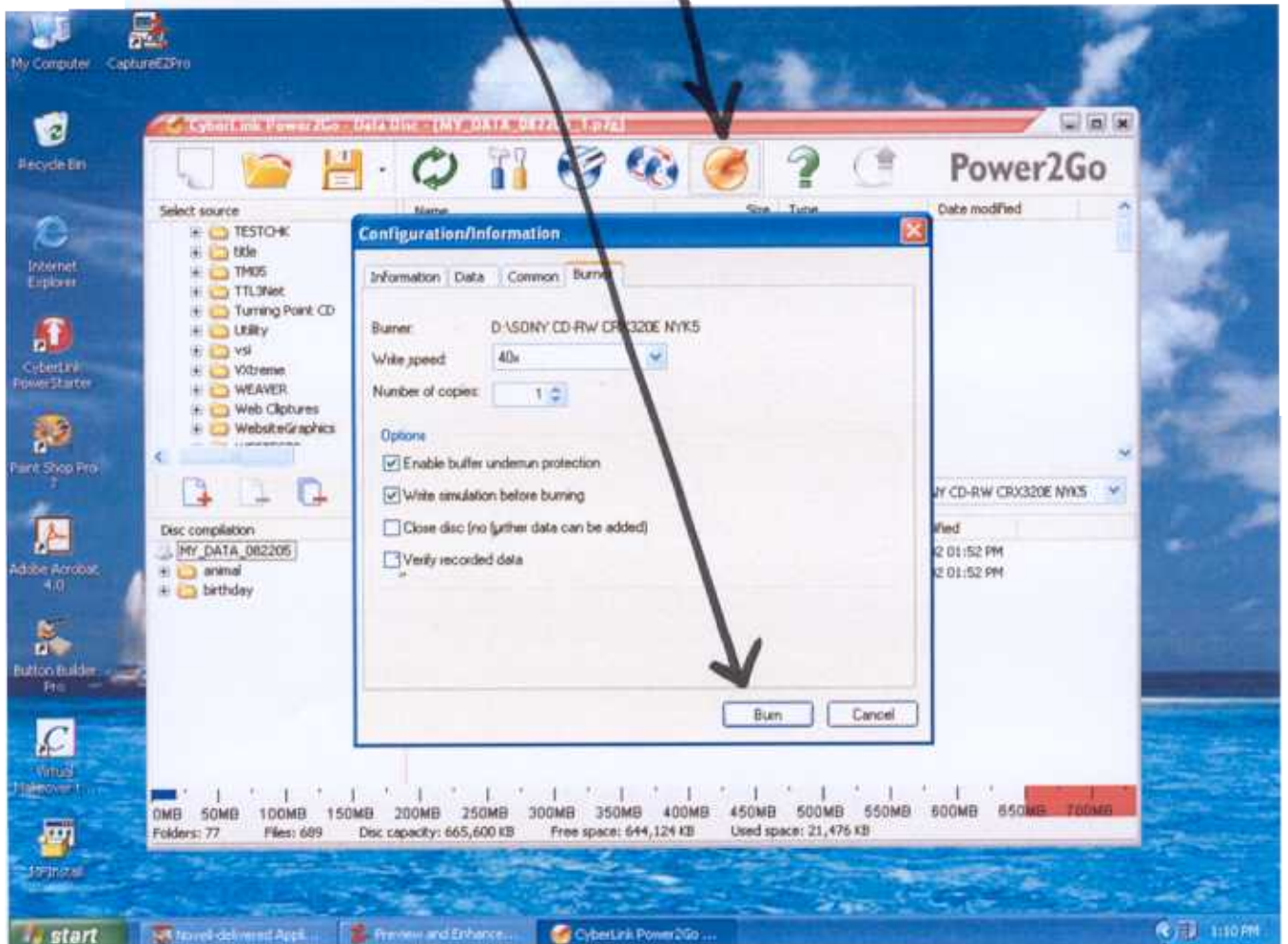
Scroll through the folders and double click on WEBSITE GRAPHICS.



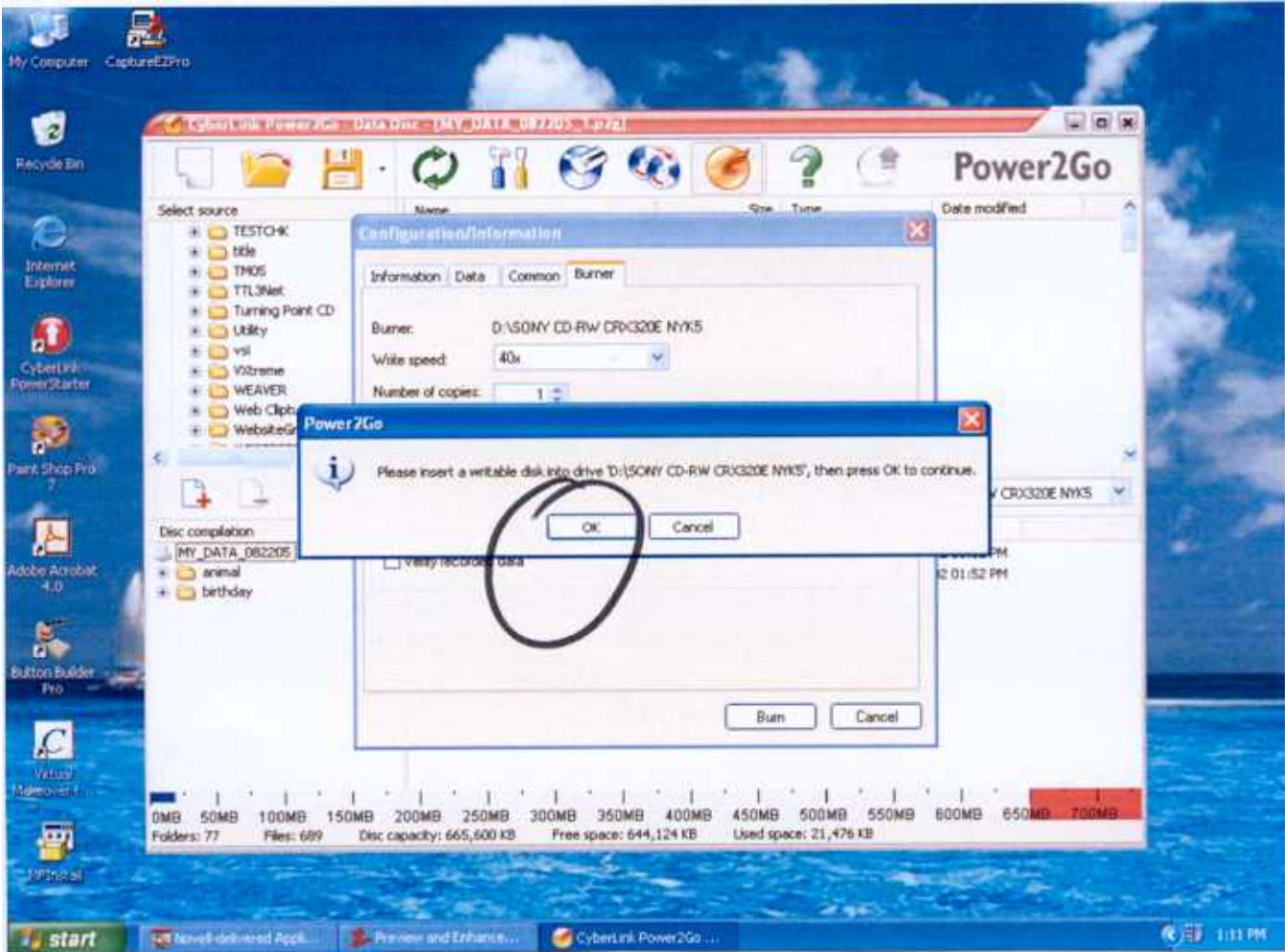
Drag the ANIMAL folder to the bottom portion of the screen. Drag the BIRTHDAY folder to the bottom portion of the screen.



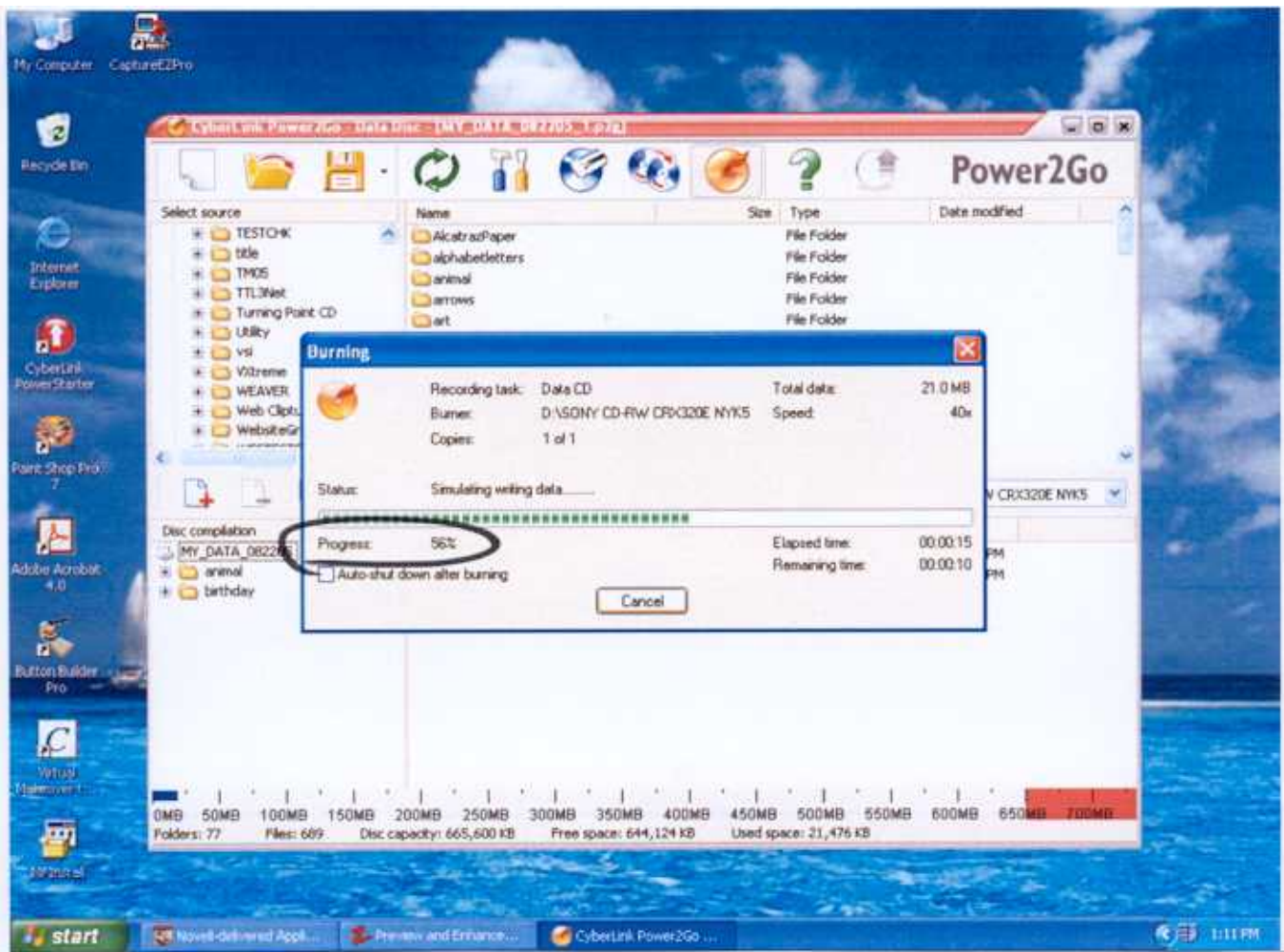
Click on the BURN icon.
Click on BURN.



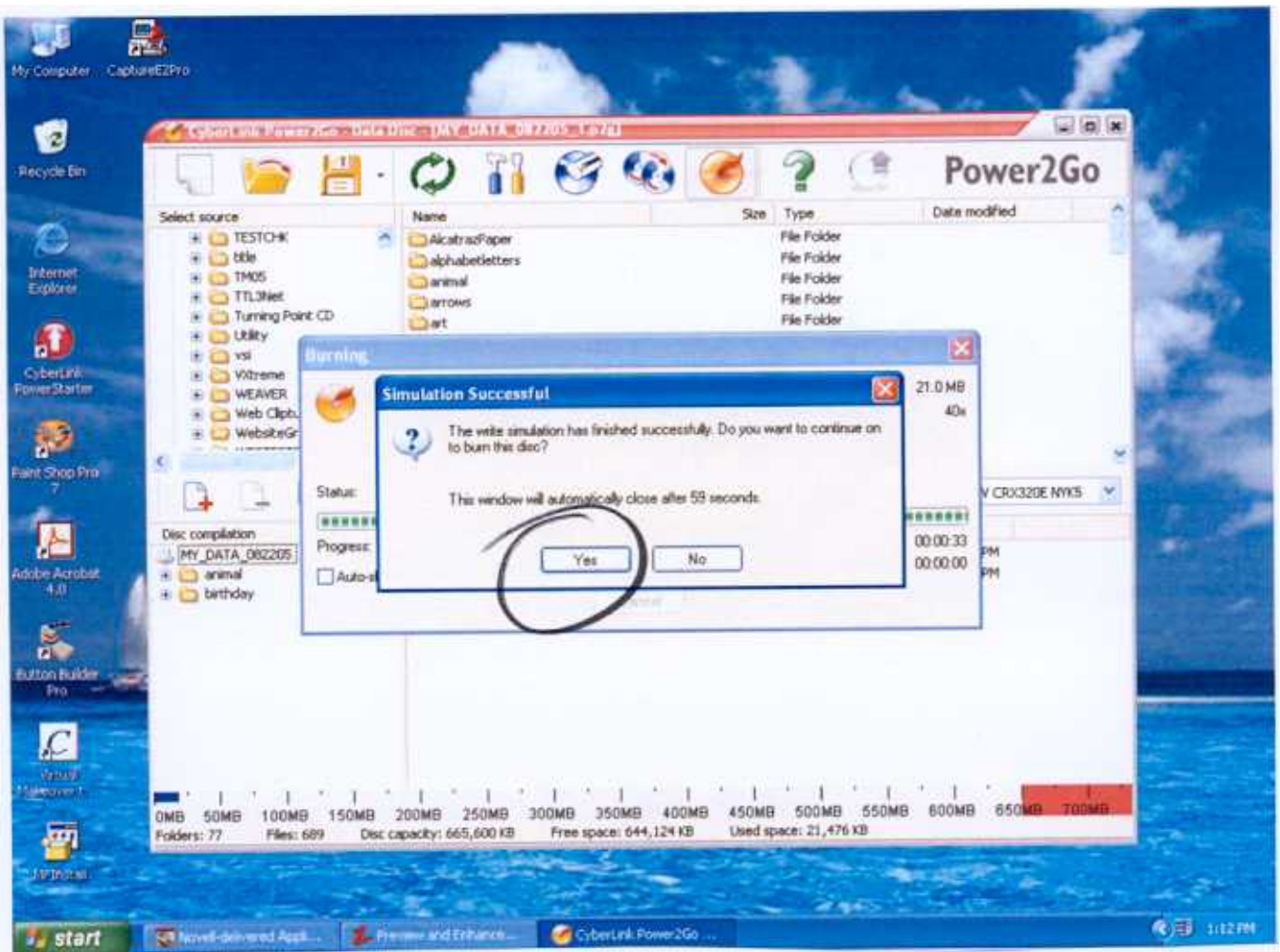
Insert a blank CD and click OK.



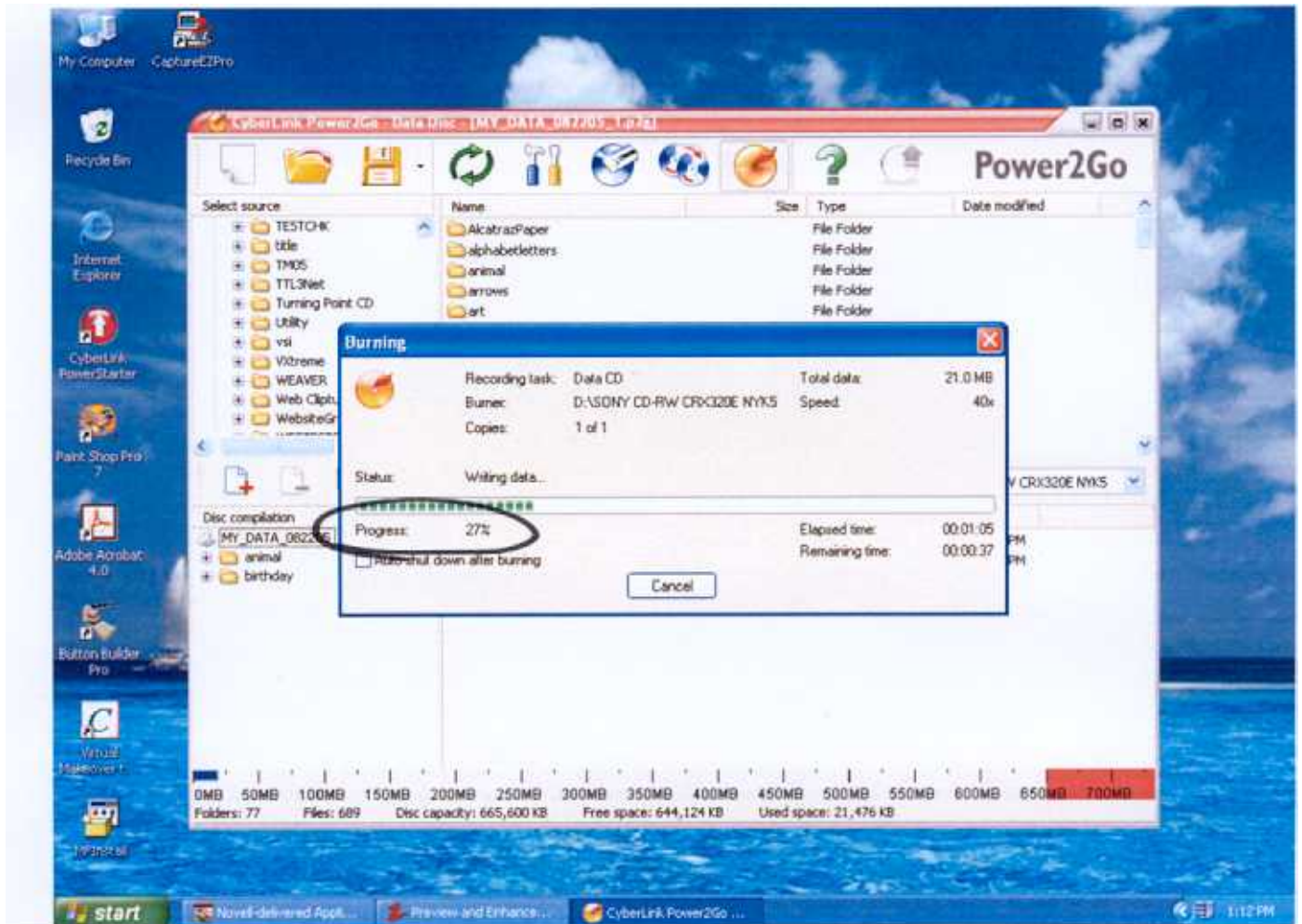
The CD will begin a simulation process to see if the blank CD is compatible with the CD burner inside your computer. When the progress reaches 100%, you will see the screen on the next page.



When the simulation has successfully finished, click YES.



The actual burn process will begin. When the progress reaches 100%, you will see the screen on the next page.



Click OK.

